

Threadneedle (Lux) Global Focus

At a glance

A best ideas global equity fund that invests in quality growth companies with durable competitive advantages and the ability to generate strong and sustainable returns.

Investment objective & policy

To provide long-term capital growth and outperform the MSCI AC World Index by investing in a concentrated and actively managed portfolio of global equities.

In line with its active management strategy of holding a small number of investments, portfolio holdings may deviate significantly from those of the index while there is also the flexibility to invest in off-benchmark companies.



David Dudding
Portfolio Manager (since March 2013)

Key facts

Fund inception date

31 March 2013

Typical fund holdings

30-50 companies

Fund size (as at 30.06.2021)

\$1.9 billion

Key reasons to invest

- 1. Differentiated investment approach:** A clear and consistent quality approach focusing on competitive advantage to deliver strong, sustainable returns.
- 2. Accesses the best global ideas:** Freedom to invest without constraints across regions, sectors and market capitalisation, accessing both developed and emerging markets.
- 3. Strength in research:** Global research capabilities and bottom-up stock picking drive high-conviction portfolio holdings.

Risks to be aware of

This fund is suitable for investors who can tolerate higher levels of risk and volatility in return for higher returns over a long-term investment horizon. Investors could lose some or all their capital and should read the Prospectus for a full description of all risks.

Investment risks: Investment in equities, portfolio concentration and currencies.

|| *We seek companies with a competitive advantage, strong cash flow generation and the ability to maintain pricing. By taking a global approach, we are not restricted by increasingly artificial regional boundaries and can invest in truly the best companies across the globe.*

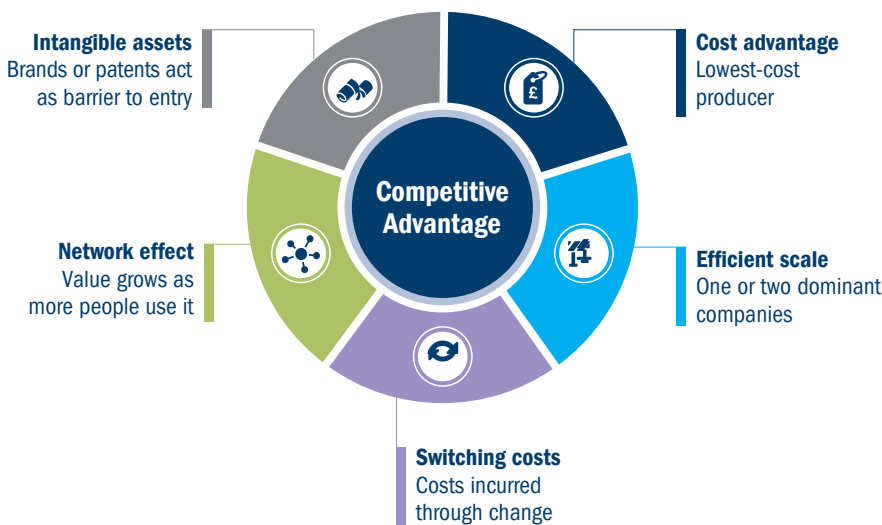
– David Dudding

Investment approach

The ability of quality companies to sustain high returns on capital and above-average growth is often underestimated, meaning that potential long-term winners trade at a discount to their intrinsic value. We search for quality stocks which have durable competitive advantages alongside robust business models, and therefore strong and sustainable long-term growth potential. The global equities team thoroughly analyses both company fundamentals and industry prospects. We use a research framework to identify the source and durability of companies' with ESG analysis central to this approach.

We work closely with our regional equity teams, global central research and responsible investment teams across the globe to build a high conviction, best ideas portfolio of some of the world's best quality companies. We are not simply looking for companies with the highest returns, but also ones where they are either stable or improving and are sustainable. As we take a 'go anywhere' approach, stock selection drives sector and regional weightings, and we believe our focus on businesses with strong fundamentals drives outperformance across a range of market conditions.

Identifying competitive advantages



Identifying risks to durability



To find out more visit columbiathreadneedle.com



Important Information: Your Capital is at risk. Threadneedle (Lux) is a Luxembourg domiciled investment company with variable capital ("SICAV"), managed by Threadneedle Management Luxembourg S.A.. This material should not be considered as an offer, solicitation, advice or an investment recommendation. This communication is valid at the date of publication and may be subject to change without notice. Information from external sources is considered reliable but there is no guarantee as to its accuracy or completeness. The SICAV's current Prospectus, the Key Investor Information Document (KIID) and the summary of investor rights are available in English and/ or in local languages (where applicable) from the Management Company Threadneedle Management Luxembourg S.A., International Financial Data Services (Luxembourg) S.A., your financial advisor and/or on our website www.columbiathreadneedle.com. These documents are available in Switzerland from the Swiss Representative and Paying Agent RBC Investor Services Bank S.A., Esch-sur-Alzette, Zurich branch, Bleicherweg 7, CH 8027 Zurich. Threadneedle Management Luxembourg S.A. may decide to terminate the arrangements made for the marketing of the Fund. Pursuant to article 1:107 of the Act of Financial Supervision, the sub-fund is included in the register that is kept by the AFM. Threadneedle (Lux) is authorised in Spain by the Comisión Nacional del Mercado de Valores (CNMV) and registered with the relevant CNMV's Register with number 177. Past performance is calculated according to the BVI method in Germany. In the EEA and Switzerland: Issued by Threadneedle Management Luxembourg S.A. registered with the Registre de Commerce et des Sociétés (Luxembourg), Registered No. B 110242, 44 rue de la Vallée, L-2661 Luxembourg, Grand Duchy of Luxembourg. In the UK: Issued by Threadneedle Asset Management Limited. Registered in England and Wales, No. 573204. Registered Office: 78 Cannon Street, London EC4N 6AG, United Kingdom. Authorised and regulated in the UK by the Financial Conduct Authority. In the Middle East: This document is distributed by Columbia Threadneedle Investments (ME) Limited, which is regulated by the Dubai Financial Services Authority (DFSA). For Distributors: This document is intended to provide distributors with information about Group products and services and is not for further distribution. For Institutional Clients: The information in this document is not intended as financial advice and is only intended for persons with appropriate investment knowledge and who meet the regulatory criteria to be classified as a Professional Client or Market Counterparties and no other Person should act upon it. **Columbia Threadneedle Investments is the global brand name of the Columbia and Threadneedle group of companies. columbiathreadneedle.com** Valid from 11.21 | Valid to 04.22 | J31911 | 3889632